



CONTACT PHONE: 0800 2 DREAM(37326)

E-MAIL: [Info@Baverhomes.co.nz](mailto:Info@Baverhomes.co.nz)

ADDRESS: Level 1/29 Great South Road, Epsom

WEBSITE: [Beaverhomes.co.nz](http://Beaverhomes.co.nz)



## COMPANY INTRODUCTION BROCHURE

NEW ZEALAND

[BEAVERHOMES.CO.NZ](http://BEAVERHOMES.CO.NZ)

MANAGEMENT - DEVELOPMENT - SUBDIVISION

FOUNDATION - CARPENTRY - INTERIORS



# WELCOME TO BEAVER HOMES



---

Beaver Homes Limited was founded in February 2021, and formed by the merger of two established construction firms in New Zealand, Leitus International Investment Limited and Dreamland Construction Company Limited. This merger could bring together the strengths and expertise of both companies, creating a powerful and well-rounded construction company.

**We maintain a high level of quality at all times and provide excellent service to our clients. Whether we build affordable properties or luxury homes, we do it all perfectly.**

Beaver Homes Limited is able to provide our clients with full peace of mind. Our strengths would depend on various factors including the quality of our management and on-site construction staff, our ability to deliver projects within budget and on time, our adherence to regulatory requirements and industry standards, and our commitment to client satisfaction.

As a fast growing innovative company, Beaver Homes is well equipped to meet the fast changing pace of the New Zealand building industry. We believe in creating communities that benefit society.

# Management Team

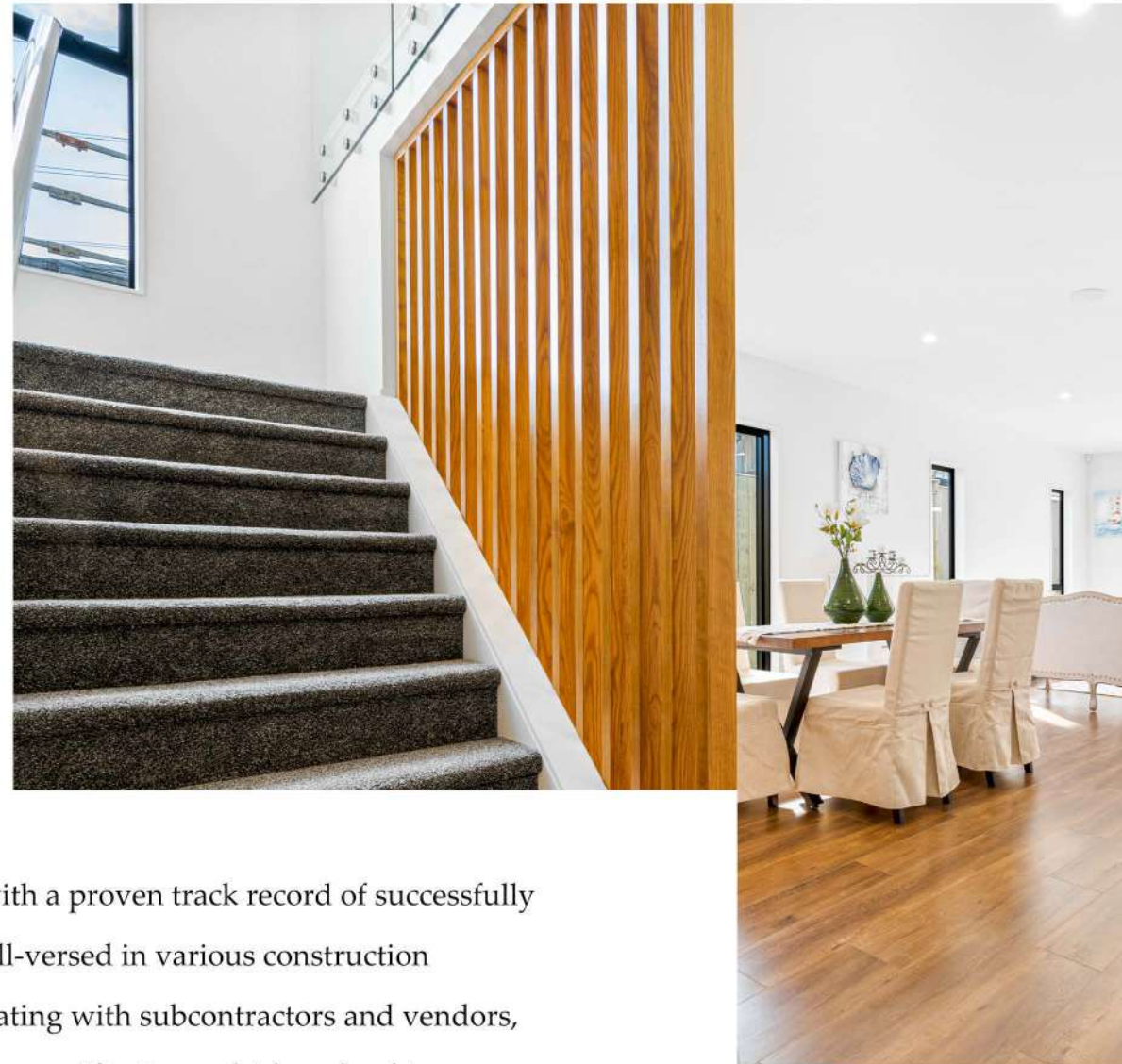
---

A strong management team is crucial for the success of any construction project. The management team of Beaver Homes Limited have some experience in managing large-scale construction projects, and our knowledge of the local construction industry can be advantageous in navigating complex regulatory requirements and ensuring that projects are completed on time.

## Project Manager - Jun Xing

Jun Xing is an experienced construction professional with a proven track record of successfully managing several large construction projects. He is well-versed in various construction methods and building materials and skilled at coordinating with subcontractors and vendors, and ensuring that projects are completed on time and to specification. which makes him a valuable asset to any project.

As a member of Master Builders in New Zealand, Jun Xing has access to the latest industry knowledge, resources, and networking opportunities, which allows him to stay up-to-date with the latest trends and best practices. His membership in this organization also demonstrates his commitment to excellence and his dedication to delivering high-quality construction projects.



## Director - Lei Huang

Lei Huang is with a Bachelor of Engineering degree from Auckland University and over 10 years of experience in the construction industry, he is likely to possess a deep understanding of engineering and construction code.

As the director of the company, Lei Huang's leadership and vision could have been critical in setting the company's direction and goals. He has a strong commitment to customer satisfaction, quality, and safety, which could drive the company's culture and values. His experience and knowledge could have positioned him well to navigate the challenges and opportunities of the construction industry in New Zealand and lead Beaver Homes Limited to success.

## Site Manage - Damon Pei

Damon is a highly skilled and qualified construction professional with a dual degree in Construction Management and Quantity Surveying. He is a young and energetic professional who is passionate about his work. He is dedicated to ensuring that every project he works on is completed to the highest standards. With his expertise in managing construction on-site, he is a valuable asset to any project team.

Damon is responsible for ensuring that all construction activities are carried out efficiently and effectively. His attention to detail and ability to manage complex projects makes him a trusted partner for any construction project. He is committed to delivering high-quality results and ensuring that every project is completed to the satisfaction of all stakeholders.



# Construction Team

---



On-site construction team is the backbone of any construction company, and our skills and expertise are critical to the success of any project. Beaver Homes Limited is likely to have a team of experienced and qualified construction professionals, including project managers, site managers, carpentry teams, foundation teams and interior teams. We can ensure that the construction process runs smoothly and efficiently.



## Carpentry Team Leader - Chengjie Chen (LBP Carpentry)

Chengjie Chen is an experienced carpentry team leader with more than 15 years of experience in the carpentry industry.

Over the years, he has honed his skills and gained valuable experience in all aspects of carpentry, from framing to finishing. His expertise in the field has made him an invaluable member of the Beaver Homes Limited team. He is also an excellent leader who has supervised and mentored over 20 students who have gone on to become team leaders in various companies in New Zealand. He understands the importance of effective communication, teamwork, and attention to detail when it comes to delivering high-quality carpentry work. Chengjie Chen will lead carpentry team with professionalism and dedication, ensuring that all carpentry work is completed to the highest standard.

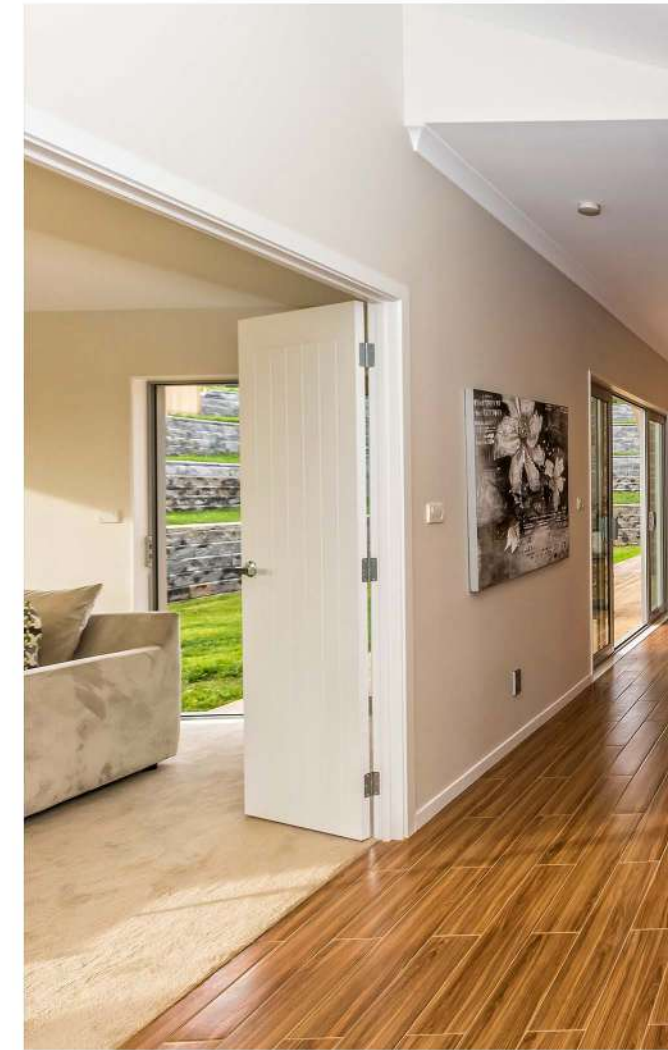
He is an excellent choice for clients looking for top-notch carpentry services.

## Foundations Team Leader – Stanley Wang (LBP Foundation & Site 2)

Stanley is a highly skilled professional with over 10 years of experience in the residential construction industry. He is highly skilled in all aspects of foundation work, from excavation and footings to formwork and pouring.

Stanley is responsible for coordinating with other teams to ensure that the foundation is built correctly and that it meets all safety and quality standards. He is responsible for ensuring that the foundation of every project is built to the highest standards.

Under Stanley's leadership, our foundations team will take great care in ensuring that the foundation work is done right, providing a strong and stable base for the rest of the construction process.



## Interior Construction Team Leader - John Liu

John Liu is over 20 years of experience in interior construction. He is well-versed in all aspects of interior construction, including gibbing, plastering, painting, and finishing work. John's expertise in interior decoration enables him to work closely with clients to understand their preferences and requirements, providing recommendations on design, colour schemes, and materials that will achieve the desired look and feel of the interior space. Throughout his career, John has earned a reputation for delivering exceptional workmanship on every project.

John Liu and his team will work completed to the highest standard.

# PROJECTS

Since its inception, Beaver Homes Limited has developed and built many houses, completing hundreds of houses in Auckland.



Among them, our team has been involved in the construction of some large projects.

155 Wallace Road, Māngere Bridge

94 Cosgrave Road, Papakura

169 Walters Road, Takanini

58 Millbrook Road, Henderson

---

All the projects completed by Beaver Homes have been well received. We implement strict construction standards in our work.

We not only consider the needs of the developers, but also the families who will occupy these homes in the future. We are always providing excellent service to everyone.



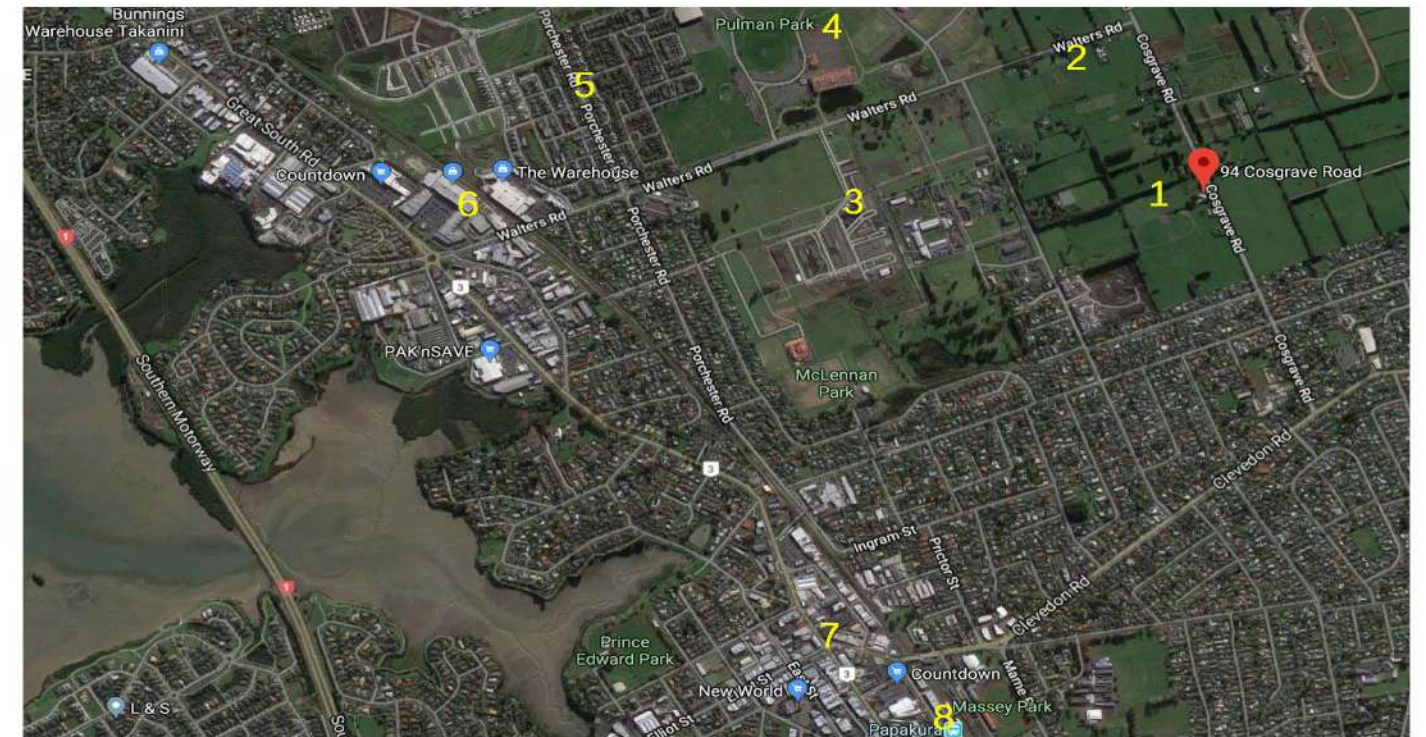
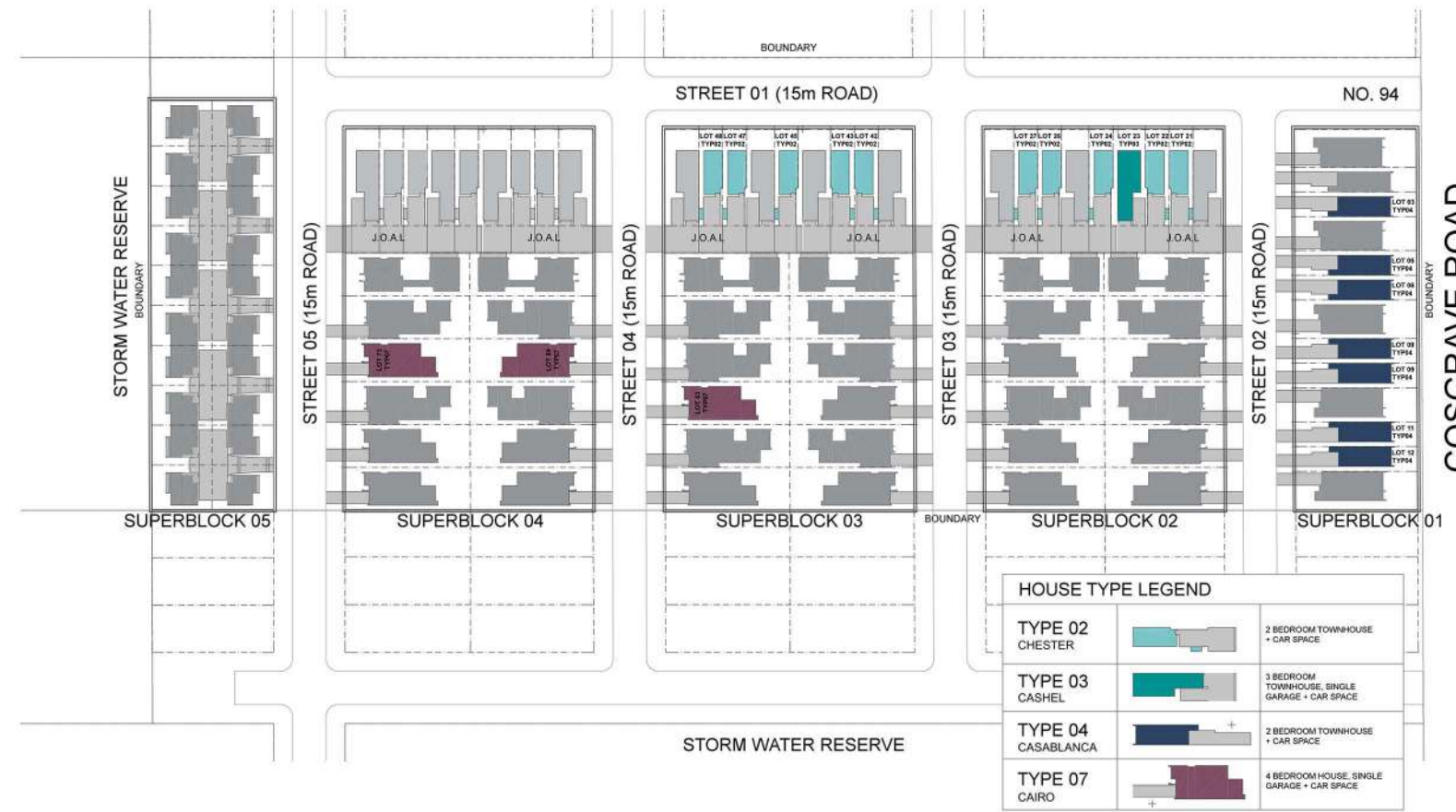
# 94 Cosgrave Road, Papakura

94 Cosgrave Road is located in Papakura, an area that is rapidly becoming one of the fastest growing in demand areas in Auckland.

Handy location to shopping malls, schools, parks and attractions such as Clevedon and Hunua within a short driving distance.

94 Cosgrave Road, Takanini, is moments from the motorway whether travelling North, South or West and easy access to Auckland Airport.

If you are looking for lifestyle and easy living that can cater to the whole family, then you have found it.



- 1. C94 SUBDIVISION
- 2. KAURI FLAT SCHOOL
- 3. MCLENNAN PARK SUBDIVISION
- 4. PULMAN PARK
- 5. ADDISION SUBDIVISION
- 6. TAKANINI SHOPPING CENTRE
- 7. PAPA KURA TOWN CENTRE
- 8. PAPA KURA TRAIN STATION

\*Northern/Southern Motorway on/off ramp only minutes away  
Map supplied by Google Maps



# 155 Wallace Rd, Mangere Bridge

18 lovely double storey family homes on a freehold title for you to enjoy.

Very convenient location, close to CBD, Auckland Airport, Mangere Bridge centre and all other amenities. What an opportunity to own this brand new stunning home in this desirable location.



Open plan living/dining with lovely kitchen completed with top quality SMEG appliances.

**A well designed layout for the whole family to enjoy.**

- ◇ Aluminium Joinery
- ◇ Modern Kitchen
- ◇ Gas Heating
- ◇ Combined Lounge & Dining
- ◇ Laundry in Garage
- ◇ Partially Fenced
- ◇ Concrete Base
- ◇ Longrun Steel Roof
- ◇ Close to Transport
- ◇ Close to Schools
- ◇ 2 Storey
- ◇ Combined Kitchen
- ◇ Heating Gas Bottle
- ◇ Gas Hot Water
- ◇ Gas Stove - Bottled
- ◇ Town Water Supply
- ◇ Urban Outlook
- ◇ Hardiplank Cladding
- ◇ Gas in Street
- ◇ Close to Shops
- ◇ Sewerage Mains
- ◇ ROW

# 169 Walters Road, Takanini



This project offers more than 70 home options providing a wide range of choices for families no matter what stage you are at.

This development is offering the very popular semi-enclosed community format, creating a comfortable, quiet and welcoming living environment.

169 Walters Road has extensive surrounding facilities. It is close to many schools, shopping centers, large supermarkets, new large stadiums and beautiful parks to meet the needs of the whole family and leisure time.





# 58 Millbrook, Henderson

---

The project of 58 Millbrook Rd was built by Beaver Homes Team, located in the rapidly developing West End of Auckland with a total of 39 homes. The convenient location and high-quality build will become the focus of customers' attention once it is launched.





## River Road, Te Atatu Peninsula

---

Those 5 premium houses are set on River Rd and are situated in the highly sought-after coastal community.

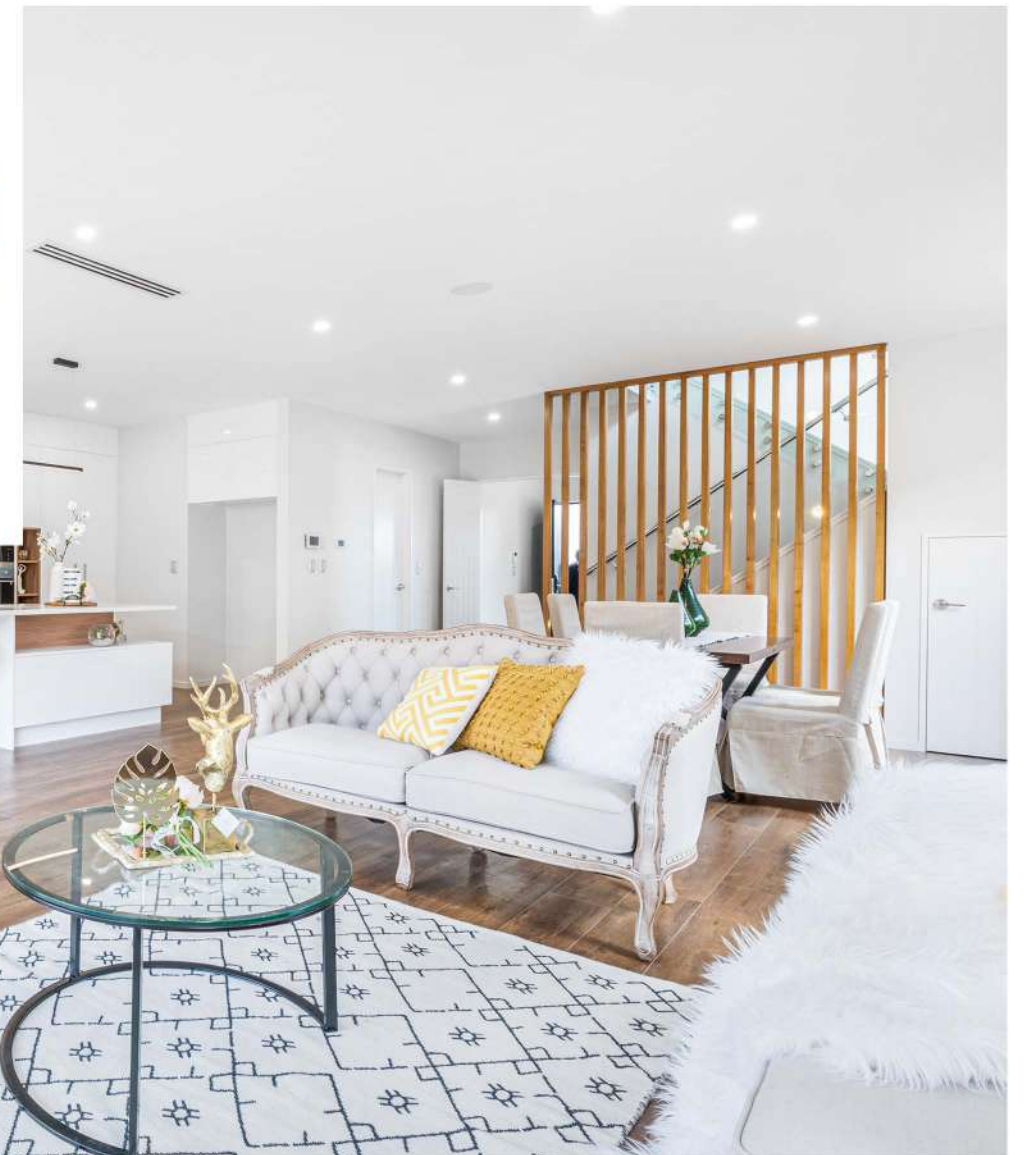
**A thoughtfully designed kitchen equipped with modern fixtures and appliances is sure to please the family!**

Those property are only moments from the main hub but is situated in a quiet known for its attractiveness, peacefulness, and well-presented homes.

# Tir Conaill Avenue Greenan Drive Thomas Road

---

Beaver Homes Team have built 6 beautiful luxury houses in Flat Bush. Perfect houses for multi-generation living! Those properties offer you more privacy.



An impressive floor plan provides an abundance of space with a great layout will provide peace of mind for the executive family and provide years of comfort and easy living.

The location, the variety of living spaces and the range of options that those houses give the modern family make it the perfect choice to raise a happy, healthy and loving household.



## Basin Place, Pukekohe

---

Here are 4 comfortable houses with luxurious decorations and built to a very high standard by Beaver Homes Team.

The location is a real stand out. Only a few minutes walk to the local supermarket and main street with numerous shops and cafes.



## Church View, Pukekohe

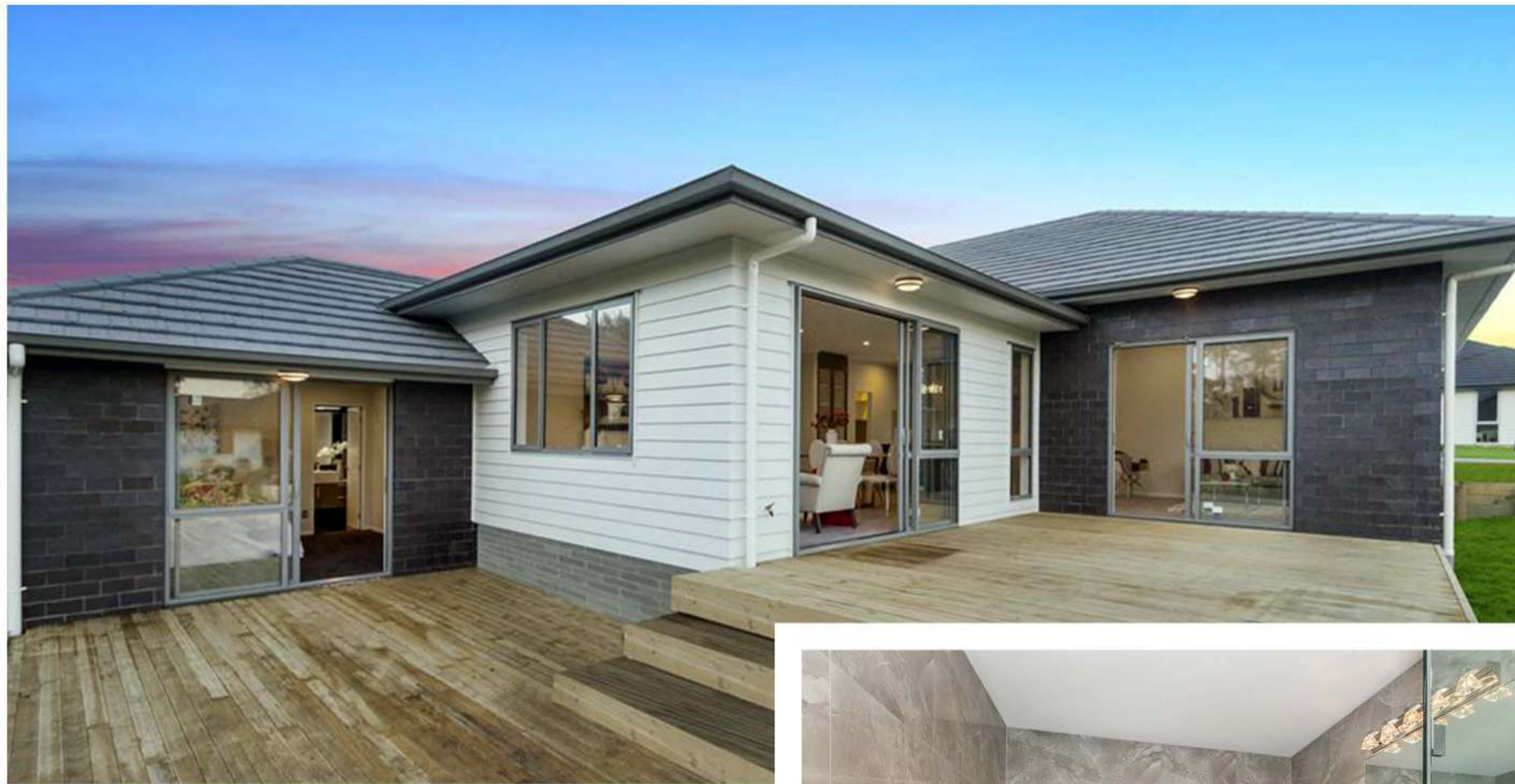
---

This house beautifully combines nature and contemporary living.

The expansive front garden and the comfortable back garden can satisfy any avid gardener.

Convenient location. Takes less than ten minutes by car to reach the nearest shopping centre.





# Laylin Place, Pukekohe

---

You will be amazed by these 4 impeccable houses.

They are located in Laylin Place.

**These spacious family homes offer a modern, fresh lifestyle that deserves your attention.**



Here we have built 4 beautiful contemporary houses.

**These houses are private and secluded, with sunny open-plan living facilities and fully equipped kitchens with stainless steel appliances and double glazed windows.**

No matter what the outdoor conditions are, just head to the private terrace for a little entertaining and soak up the sun.



---

# Glory Way, Pukekohe

# NOTES



LOOKING FOR NEW PROPERTY  
COULDN'T BE EASIER

Discover Your Place To Live